

Swivel castor with total lock SMMST 200 PEK

Extra Heavy Duty Series SMM - Wheel PE

-40 °C - +80 °C

+++
swivels easily

+++
wear resistant

+++
shock proof

+++
floor protective

+++
weather proof

Wheel



Casted high quality nylon wheel

Fork



Solid steel welded construction, with axial grooved ball bearing DIN 711 and tapered roller bearing DIN 720, very strong integrated Kingpin, with grease nipple, sealed with 2 o-rings finish: alu-grey painted on request: zinc-plated and passivated (chrom VI-free)

Swivel castor with total lock Wheel-Ø A x width B mm: 200x50+50

Load Capacity kg: 3500

Load capacity tested according to EN 12530 and EN 12527

Overall height H mm: 265

Dimension of top plate TP 175x140 mm:

Hole spacing HS mm: 140x105

Hole-Ø HD mm: 15

Swivel radius SR mm: 172

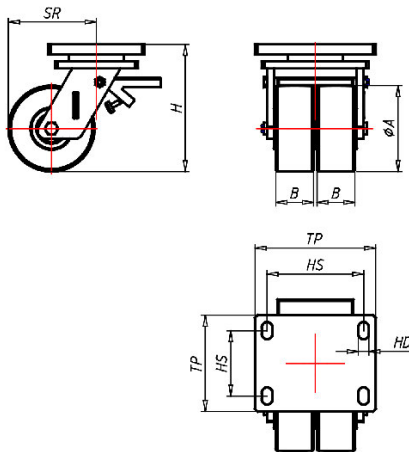
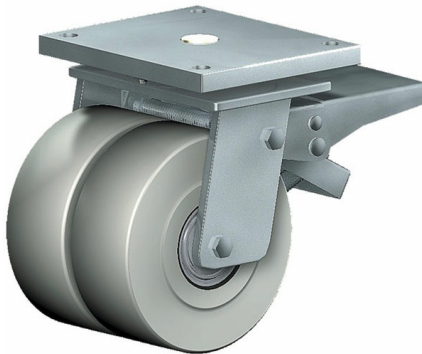
Wheel bearing: Ball bearing

Advantages

- ✓ for extra heavy loads
- ✓ easy running on smooth floors
- ✓ impact proof
- ✓ high abrasion resistance
- ✓ easy to clean
- ✓ high chemical resistance

©Copyright 2024 Rollenbau GmbH, www.rollenbau.at 20.05.2024

ROLLENBAU



Applications

- Metal-Technology
- Heavy duty dollies
- Trash container trucks
- Machinery moving dollies
- Workshops
- Racks
- Building-Industry